

COUNTY OF LOS ANGELES

ROAD DEPARTMENT

PRECISE

BENCH MARK LIST



POMONA QUAD

1980 ADJUSTMENT

P R E F A C E
1980 Adjustment

The Road Department level net published in 1975 consisted of more than 1500 miles of levels supporting in excess of 18,000 bench marks. For reasons of economy, this 1980 adjustment is reduced to about 55% of the bench marks previously published. Reductions were made by increasing the spacing between level lines in unincorporated territory, and eliminating lines in non-contract cities and areas where the probability of future engineering projects appears slight. The 1980 adjustment is an update of the remainder of the 1975 bench marks, not including baselines. Data from previous adjustments is available without inferring any responsibility for the current reliability of the data or the actual existence of the bench marks. Elevations of bench marks with the same quad name, but different adjustment dates, are not normally compatible.

To facilitate the adjustment, indexing, and distribution of adjusted values of the net, the County territory is divided into 34 quads or areas. For identification purposes each quad is given a name, viz., "Rosemead," "La Mirada," "Santa Fe," etc. When bench marks and elevations in the Road Department net are used, the name of the quad in which the bench mark is located and the date of the elevation adjustment must be included in the bench mark description, e.g.,

CY 6901 - RDEM TAG S CB 11FT E BCR @ SE COR LA CIENEGA
BLVD & LENNOX BLVD 32FT S & 73FT E C/L INT
(HAWTHORNE - 1980) ELEV. 82.549

The precision of the net is reflected by an indicated field probable error of plus or minus 0.012 foot per mile of leveling as determined from over 300 conditions of closure. However, many years experience in vertical control in the greater Los Angeles basin and Antelope Valley indicate that because of varying degrees of subsidence and heaving, the true datum is recovered only by obtaining substantial agreement between a number of bench marks.

The users of this net are invited to assist in its maintenance by notifying this Department of cases of obliteration, apparent mistakes in descriptions or elevations, and proven disturbance of bench marks.

DATUM: U. S. Coast and Geodetic Survey Sea Level Datum
of 1929, through the medium of the Los Angeles
County Engineer Precise Level Net.

ABBREVIATIONS USED IN BENCH MARK LISTINGS

ABUT - - - - -	Abutment	EC - - - - -	End of Curve
ALG - - - - -	Along	ENT - - - - -	Entrance
ANG PT - - - - -	Angle Point	FL - - - - -	Floor
B/W - - - - -	Back of Walk	FTG - - - - -	Footing
BCR - - - - -	Beginning of Curb Return	FRWY - - - - -	Freeway
BC - - - - -	Beginning of Curve	F/W - - - - -	Front of Walk
BLDG - - - - -	Building	GAR - - - - -	Garage
BM - - - - -	Bench Mark	HDWL - - - - -	Headwall
BT SPK - - - - -	Boat or Bolt Spike	HSE - - - - -	House
BR CAP - - - - -	Brass or Bronze Cap	HWY - - - - -	Highway
C B - - - - -	Catch Basin	INT - - - - -	Intersection
CTR - - - - -	Center	IP - - - - -	Iron Pipe
C/L - - - - -	Center Line	LT - - - - -	Left
C/L INT - - - - -	Center Line Intersection	LACE - - - - -	L. A. City Engineer
C/L PROD - - - - -	Center Line Produced	LACS - - - - -	L. A. Co. Engineer
CONC - - - - -	Concrete	LAFC - - - - -	L. A. Co. Flood Control
COR - - - - -	Corner	L&BN - - - - -	Lead and Bench Nail
COE - - - - -	Corps of Engineers	L&BR - - - - -	Lead and Brad
CULV - - - - -	Culvert	L&N - - - - -	Lead and Nail
CYN - - - - -	Canyon	L&SPK - - - - -	Lead and Spike
CB - - - - -	Curb	L&T - - - - -	Lead and Tack
CS MON - - - - -	Co. Engineer Monument	MCR - - - - -	Middle of Curb Return
CT SPK - - - - -	Cut Spike	MKD - - - - -	Marked
DR - - - - -	Drive or Driveway	MC - - - - -	Middle of Curve
E/O - - - - -	East of	MON - - - - -	Monument
ECR - - - - -	End of Curb Return	N/O - - - - -	North of

ABBREVIATIONS USED IN BENCH MARK LISTINGS . . . CONTINUED

NR - - - - - Near
OPP - - - - - Opposite
PI - - - - - Point of Intersection
PK&W - - - - - FK Nail and Washer
P/L - - - - - Property Line
POST - - - - - Point on Semi-Tangent
PP - - - - - Power Pole
PVMT - - - - - Pavement
PROD - - - - - Produced
RD - - - - - Road
RDEM - - - - - Road Dept. Bench Mark
RDEM TAG - - - - - Road Dept. Bench Mark Tag
RR - - - - - Railroad
RT - - - - - Right
R/W - - - - - Right of Way
SDMH - - - - - Storm Drain Manhole
SMH - - - - - Sewer Manhole
SPK - - - - - Spike
ST&W - - - - - Spike Tin and Washer
S/O - - - - - South of
TP - - - - - Telephone Pole
USC&GS - - - - - U. S. Coast and Geodetic Survey
USGS - - - - - U. S. Geological Survey
WK - - - - - Walk
W/O - - - - - West of

ANGELES

POMONA

QUAD

12-1-80

P I M A S

Q U A D

S A N

OTTERBEIN

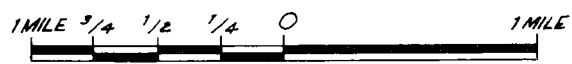
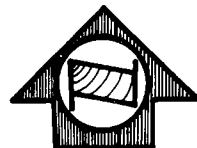
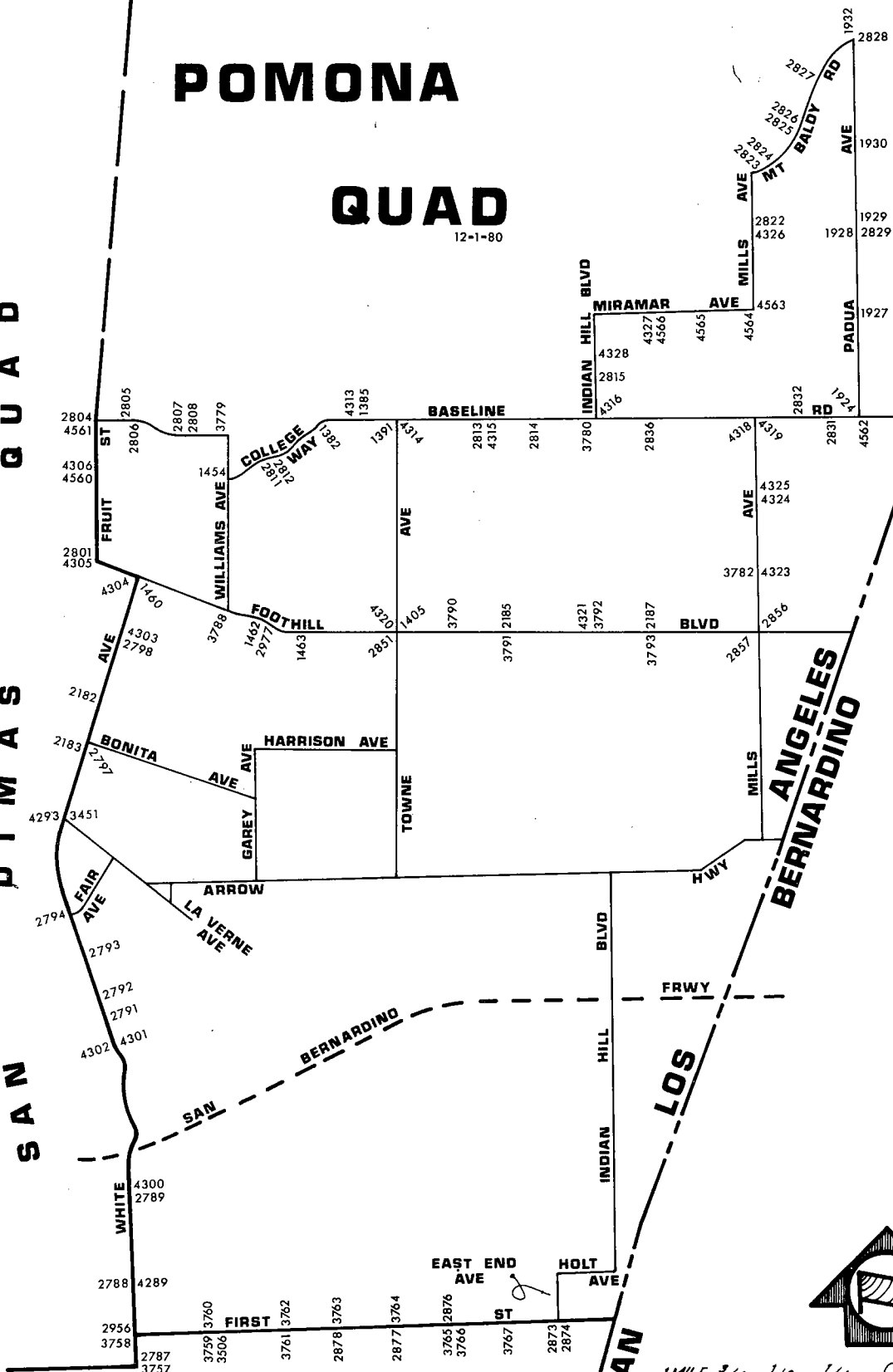
QUAD

COUNTY
COUNTY

ANGELES
BERNARDINO

LOS

SAN



SCALE

LIGHT SOLID LINES WITHOUT NUMBERS INDICATE PREVIOUS LINES OF BENCH MARKS THAT ARE NOT INCLUDED IN THE 1980 ADJUSTMENT.

QUAD-YEAR	ELEV	DESCRIPTION (INCLUDE QUAD AND YEAR IN DESCRIPTION)	BM NUMBER
POMONA (1980)	1345.568	USC&GS BR CAP 3FT N C/L PROD BASE LINE RD & 40FT NW C/L COLLEGE WAY MKD (USC&GS FRENCH)	CG 1382
POMONA (1980)	1337.552	L&T E CB 12FT N BCR @ NE COR BASE LINE RD & LIVE OAK DR 15FT E & 49FT N C/L INT	CG 1385
POMONA (1980)	1297.983	L&BN TOP OF S CONC & ROCK PILLAR OF DR TO HSE NO 4353 TOWNE AVE 230FT S C/L BASELINE RD & 30FT W C/L TOWNE AVE	CG 1391
POMONA (1980)	1195.797	L&T 15FT W BCR @ SE COR TOWNE AVE FOOTHILL BLVD 58FT E & 40FT S C/L INT	CG 1405
POMONA (1980)	1258.084	L&BN IN S WINGWALL OF BRIDGE 15FT W C/L WILLIAMS AVE & 45FT S C/L BOWDOIN ST MKD (SD 501)	CG 1454
BASELINE (1975)	1150.120	CS MON SE COR WHITE AVE & FOOTHILL BLVD 15FT E & 51FT S/O C/L INT MKD (13-9 1952)	CG 1460
POMONA (1980)	1164.544	L&T IN S CB 1FT W BCR @ SE COR GAREY AVE & FOOTHILL BLVD 2FT W C B 70FT E & 38FT S C/L INT	CG 1462
POMONA (1980)	1171.563	L & BN IN CB 38FT S C/L FOOTHILL BLVD & 344FT W C/L SUMMER AVE (MKD SD 507)	CG 1463
POMONA (1980)	1515.984	CS BR CAP MON IN WELL 3FT SE C/L INT PADUA AVE & BASELINE RD MKD (LA VERNE M 10 RE 2177)3FT SE FOUND CD ENG SEC COR IN WELL	CG 1924
POMONA (1980)	1604.380	L&T IN TOP OF WINGWALL @ ENT TO DR 35FT E & 5FT S OF C/L INT PADUA AVE & MIRAMAR AVE MKD (BM)	CG 1927
POMONA (1980)	1685.861	RDBM TAG IN BRICK BASE OF FENCE 2FT W OF COR 30FT S & 32FT W C/L INT PADUA AVE & POMELLO DR	CG 1928
POMONA (1980)	1686.502	CS BR CAP MON IN WELL @ C/L INT PADUA AVE & POMELLO DR USE NE EDGE	CG 1929
POMONA (1980)	1759.551	CS BR CAP MON IN WELL @ C/L INT PADUA AVE 0.5MI N POMELLO DR NR DRWY TO HSE NO 4064 MKD (1/4 SEC T1N R8W S26-27) 25FT SE PP NO 26909Y USE E EDGE	CG 1930
POMONA (1980)	1807.701	RDBM TAG 18IN S OF N EDGE OF CONC DR 1FT E OF BLOCK PILLAR @ ENT TO L A CO FIRE STA NO 62 264FT N & 28FT W C/L INT PADUA AVE & MT BALDY RD	CG 1932
BASELINE (1975)	1081.583	CS MON IN WELL 2FT N OF N CB 7TH ST 17FT W BCR @ NW COR WHITE AVE 18FT N & 43FT W/O C/L INT MKD (BM 13-8 1952)	CG 2182

QUAD-YEAR	ELEV	DESCRIPTION (INCLUDE QUAD AND YEAR IN DESCRIPTION)	BM NUMBER
BASELINE (1975)	1063.520	L&BN W CB WHITE AVE 10FT S BCR @ SW COR BONITA AVE 25FT W & 71FT S C/L INT	CG 2183
POMONA (1980)	1230.828	BT SPK E CB @ NE COR MOUNTAIN AVE & FOOTHILL BLVD IN N WALL C B 30FT E & 65FT N C/L INT MKD (SD 515)	CG 2185
POMONA (1980)	1282.011	L&PK @ NW COR FOOTHILL BLVD & COLLEGE AVE 10FT W/O BCR 55FT W & 57FT N C/L INT MKD (33)	CG 2187
BASELINE (1975)	845.972	L&BN E CB WHITE AVE 1FT N BCR @ NE COR 2ND ST 61FT N & 42FT E C/L INT	CG 2787
BASELINE (1975)	858.171	CS MON IN WELL 7IN DN IN GUTTER @ SW COR HOLT AVE & WHITE AVE 36FT S & 55FT W C/L INT MKD (BM 13-1 1952)	CG 2788
BASELINE (1975)	884.618	CS MON BIN DN @ SE COR WHITE AVE & ORANGE GROVE AVE 46FT E C/L WHITE AVE & 2FT S OF S CB LINE ORANGE GROVE AVE MKD (BM 13-28 1959 RESET)	CG 2789
BASELINE (1975)	950.184	CS MON IN WELL IN LA CO FAIR GROUNDS 78FT ELY & 66FT SLY OF SELY COR MAIN EXHIBIT BLDG NO 4 25FT NLY OF ENT GATE	CG 2791
BASELINE (1975)	966.907	CS MON IN WELL LA CO FAIR GROUNDS 88FT NELY FROM NELY COR MAIN EXHIBIT BLDG NO 4 39FT NWLY FROM FIRE HYD @ INT OF PULL TIES	CG 2792
BASELINE (1975)	987.446	CS MON IN WELL 40FT SWLY FROM NELY COR COW BARN NO 11 30FT SLY FROM 14IN COTTONWOOD TREE IN LINE WITH NLY EDGE OF GRANDSTAND INSIDE LA COUNTY FAIRGROUNDS	CG 2793
BASELINE (1975)	1000.859	L&PK E CB WHITE AVE 12FT S OF S EDGE CONC APRON OF GATE 14 TO LA CO FAIR GRDS 0.4MI S ARROW HWY 40FT E C/L WHITE AVE	CG 2794
BASELINE (1975)	1064.306	L&BN S CB BONITA AVE 0.5FT W BCR @ SE COR WHITE AVE 37FT E @ 25FT S C/L INT	CG 2797
BASELINE (1975)	1102.099	L&BN E CB WHITE AVE 1FT S BCR @ SE COR KENDALL ST 50FT S & 40FT E C/L INT	CG 2798
BASELINE (1975)	1139.451	BT SPK 61FT N BCR 163FT N & 40FT W C/L INT FOOTHILL BLVD & FRUIT ST MKD (BM 13-10B)	CG 2801
BASELINE (1975)	1173.924	CS MON 10IN DN @ C/L INT BASELINE RD & FRUIT ST	CG 2804

QUAD-YEAR	ELEV	DESCRIPTION (INCLUDE QUAD AND YEAR IN DESCRIPTION)	BM NUMBER
POMONA (1980)	1192.355	CS MON 10IN DN @ C/L BASELINE RD 152FT W JAPONICA AVE MKD (1/4 SEC COR SEC 31 SEC 6 RE 5869)	CG 2805
POMONA (1980)	1193.712	CS TAG S CB BASELINE RD 23FT W BCR @ SW COR JAPONICA AVE 79FT W & 40FT S C/L INT	CG 2806
POMONA (1980)	1219.917	L&BN N CB BASELINE RD 1FT W BCR @ NW COR ST MARK AVE 52FT W & 34FT N C/L INT	CG 2807
POMONA (1980)	1224.062	L&BN N CB BASELINE RD @ NE COR ST MARK AVE 52FT E & 34FT N C/L INT	CG 2808
POMONA (1980)	1308.300	RAMSET S CB COLLEGE WAY 1FT W BCR @ SW COR TENANGO RD 62FT W & 18FT S C/L INT	CG 2811
POMONA (1980)	1311.628	RDBM TAG S CB COLLEGE WAY 2FT E BCR @ SE COR TENANGO RD 60FT E & 18FT S C/L INT	CG 2812
POMONA (1980)	1346.134	L & T W CB MOUNTAIN AVE 0.5FT S BCR @ SW COR BASELINE RD & MOUNTAIN AVE 70FT S & 28FT W C/L INT	CG 2813
POMONA (1980)	1368.880	RDBM TAG S CB BASELINE RD 40FT S & 184FT E C/L INT VILLA MARIA RD	CG 2814
POMONA (1980)	1419.191	L & T S CB TO DRWY OF HSE NO 2258 INDIAN HILL BLVD 63FT E C/L 248FT S INT SAN LUIS PL	CG 2815
POMONA (1980)	1620.793	2IN IP C/L MILLS AVE 52FT N C/L POMELLO DR 3IN DN (USE NE EDGE)	CG 2822
POMONA (1980)	1660.407	L & BN SW LEG CONC BASE TO TOWER NO 228 D6 400FT E & 81FT N C/L INT MILLS AVE & MT BALDY RD	CG 2823
POMONA (1980)	1660.392	L & BN SE LEG CONC BASE TO TOWER NO 228 D6 435FT E & 81FT N C/L INT MILLS AVE & MT BALDY RD	CG 2824
POMONA (1980)	1687.215	L&BN SE CONC BASE TO TOWER 228 D 5 @ NW COR MT BALDY RD & VIA PADOVA 82FT N & 56FT W C/L INT	CG 2825
POMONA (1980)	1690.158	L&BN N END ROCK WALL 52FT N & 25FT W MT BALDY RD & VIA PADOVA	CG 2826
POMONA (1980)	1732.973	L&T BOT STEP CONC WK TO POTTERY SHOP NO 4111 APPROX 0.25MI E VIA PADOVA & 78FT N/O C/L MT BALDY RD MKD (BM)	CG 2827
POMONA (1980)	1806.447	L&T ROCK WL @ NE COR MT BALDY RD & PADUA AVE 77 FT N & 30FT E C/L INT	CG 2828

QUAD-YEAR	ELEV	DESCRIPTION (INCLUDE QUAD AND YEAR IN DESCRIPTION)	BM NUMBER
POMONA (1980)	1685.532	RDBM TAG E CB PADUA AVE 3FT S BCR @ SE COR PAM- ELLO DR 58FT S & 32FT E C/L INT	CG 2829
POMONA (1980)	1641.215	L&T CONC WK TO HSE NO 950 ALAMOSA DR 85FT W & 29FT S C/L INT PADUA AVE MKD (BM)	CG 2830
POMONA (1980)	1512.207	L&T CONC STEP TO ROCK PUMP HSE NO 1900 283FT W & 32FT S C/L INT PADUA AVE & BASELINE RD MKD (BM)	CG 2831
POMONA (1980)	1487.162	RAMSET E CB CLAREMONT HEIGHTS DR 1FT N BCR @ NE COR BASELINE RD 63FT N & 18FT E C/L INT	CG 2832
POMONA (1980)	1418.812	RDBM TAG S CB BASELINE RD 55FT W & 40FT S/O C/L INT FORBES AVE	CG 2836
POMONA (1980)	1194.052	CS BR CAP MON IN WELL @ SE COR FOOTHILL BLVD & TOWNE AVE 67FT S & 51FT E C/L INT MKD (RE 5869 1961 RM 5)	CG 2851
POMONA (1980)	1307.161	L&PK N CB 5FT E BCR @ NE COR FOOTHILL BLVD & MILLS AVE 50FT E & 45FT N C/L INT	CG 2856
POMONA (1980)	1304.364	RDBM TAG S CB 1FT W BCR @ SW COR FOOTHILL BLVD & MILLS AVE 45FT S & 55FT W C/L INT	CG 2857
BASELINE (1975)	900.686	L & T W CB EAST END AVE 2FT N BCR @ NW COR E FIRST ST 60FT N & 40FT W C/L INT	CG 2873
BASELINE (1975)	899.111	CS BR CAP MON FL 1FT S CF & 8FT W/O BCR S CB E FIRST ST @ SW COR EAST END AVE 84FT W & 21FT S C/L INT MKD (11-77-A 1959 CE RE 5869)	CG 2874
BASELINE (1975)	885.424	BR PLATE FL N END C B 30FT E C/L RESERVOIR ST 150FT N C/L E FIRST ST (MKD BM11-78A 1962 RE 5869)	CG 2876
BASELINE (1975)	876.842	L & BR E CB SAN ANTONIO AVE @ SE COR E FIRST ST 64FT S & 35FT E C/L INT	CG 2877
BASELINE (1975)	876.062	LACS BM MON FL @ SW ABUT OF BRIDGE OVER TOWNE AVE & 51FT W C/L 27FT S C/L FIRST ST MKD (CE BM 11-79A 1962 RE 5869)	CG 2878
BASELINE (1975)	850.539	CS BM MON FL IN HDWL 27FT S C/L FIRST ST & 84FT W WHITE AVE MKD (BM 11-83-A 1962 RE 5869)	CG 2956
POMONA (1980)	1163.793	L&N W CB 48FT S BCR @ SW COR FOOTHILL BLVD & GAREY AVE 111FT S & 42FT W C/L INT MKD (SD 504)	CG 2977
BASELINE (1975)	1036.367	RDBM TAG 1FT N'LY BCR 60FT S'LY & 40FT W'LY C/L INT ARROW HWY & WHITE AVE	CG 3451

QUAD-YEAR	ELEV	DESCRIPTION (INCLUDE QUAD AND YEAR IN DESCRIPTION)	BM NUMBER
BASELINE (1975)	858.794	USC&GS MON FL @ W END C B 40FT E & 20FT N C/L INT FIRST ST & GORDON ST (MKD Q36 861 RESET 67)	CG 3506
BASELINE (1975)	845.723	RDBM TAG IN W CB 2FT S BCR 65FT S & 32FT W C/L INT 2ND ST & WHITE AVE	CG 3757
BASELINE (1975)	851.169	RDBM TAG IN S CB 30FT E BRIDGE ABUT 21FT S & 77FT E C/L INT FIRST ST & WHITE AVE	CG 3758
BASELINE (1975)	859.155	RDBM TAG IN N CB 20FT N & 5FT E C/L INT 1ST ST & S GORDON ST	CG 3759
BASELINE (1975)	857.253	RDBM TAG IN E CB 35FT S & 24FT E C/L INT 1ST ST & S GORDON ST	CG 3760
BASELINE (1975)	868.168	RDBM TAG N CB 5FT W/O BCR 20FT N & 60FT W C/L INT FIRST ST & PALOMARES ST	CG 3761
BASELINE (1975)	868.933	RDBM TAG IN S CB 1FT E BCR 20FT S & 59FT E C/L INT 1ST ST & PALOMARES ST	CG 3762
BASELINE (1975)	875.599	L & PK IN E END WINGWALL OF BRIDGE OVER TOWNE AV 26FT S & 79FT E C/L INT 1ST ST & TOWNE AVE	CG 3763
BASELINE (1975)	878.255	RDBM TAG IN N CB 6FT W/O END 20FT N & 72FT W C/L INT 1ST ST & SAN ANTONIO AVE	CG 3764
BASELINE (1975)	884.056	RDBM TAG IN N CB 20FT N & 92FT W C/L INT 1ST ST & RESERVOIR ST	CG 3765
BASELINE (1975)	883.319	RDBM TAG IN S CB 2FT E BCR 20FT S & 59FT E C/L INT 1ST ST & RESERVOIR ST	CG 3766
BASELINE (1975)	889.301	RDBM TAG IN CB 20FT S C/L 1ST ST @ E P/L WATER RESERVOIR 286FT E INT ELECTRA ST	CG 3767
POMONA (1980)	1277.201	CT SPK & W IN ROCK WALL 30FT S & 17FT E C/L INT BASE LINE RD & WILLIAMS AVE	CG 3779
POMONA (1980)	1394.082	USC&GS MON FL IN CB 3FT E BCR 40FT N 75FT W C/L INT BASE LINE RD & INDIAN HILL BLVD MKD (D 36 RESET 1967)	CG 3780
POMONA (1980)	1354.024	L & PK 1FT N BCR 60FT N & 35FT W C/L INT MILLS AVE & BLAISDELL DR	CG 3782
POMONA (1980)	1161.230	LAFC BR CAP MON FL 22FT N/O BCR 94FT N & 20FT E C/L INT FOOTHILL BLVD & WILLIAMS AVE MKD (105-01905)	CG 3788
POMONA (1980)	1214.437	RDBM TAG IN N CB FOOTHILL BLVD 38FT N C/L & 550FT E C/L REGIS ST 75FT E/O BLDG NO. 973	CG 3790

QUAD-YEAR	ELEV	DESCRIPTION (INCLUDE QUAD AND YEAR IN DESCRIPTION)	BM NUMBER
POMONA (1980)	1230.194	RDBM TAG 35FT E BCR 38FT S & 103FT E C/L INT FOOTHILL BLVD & MOUNTAIN AVE @ ENT TO C B	CG 3791
POMONA (1980)	1256.948	RDBM TAG 5FT N BCR 105FT N & 35FT E C/L INT FOOTHILL BLVD & INDIAN HILL BLVD	CG 3792
POMONA (1980)	1280.169	RDBM TAG 3FT W BCR 55FT S & 46FT W C/L INT FOOTHILL BLVD & COLLEGE AVE	CG 3793
BASELINE (1975)	1037.900	L & T CTR CB RET @ NW COR WHITE AVE & ARROW HWY 55FT N/O & 70FT W/O C/L INT	CG 4293
BASELINE (1975)	859.478	RAMSET 17FT S/O BCR @ SE COR WHITE AVE & HOLT AVE 34FT E & 87FT S/O C/L INT	CG 4299
BASELINE (1975)	887.044	L&PK NAIL CTR CB RET @ NE COR WHITE AVE & ORANGE GROVE AVE 46FT N & 54FT E/O C/L INT	CG 4300
BASELINE (1975)	933.797	PK IN CONC CB 1FT N/O BCR @ SE COR WHITE AVE & MC KINLEY AVE 71FT S & 55FT E/O C/L INT	CG 4301
BASELINE (1975)	935.465	L AFC BR DISC @ W END CONC HDWL OF FC CHANNEL @ NW COR MC KINLEY AVE & WHITE AVE 37FT N & 114FT W/O C/L INT MKD (BM 105-00005)	CG 4302
BASELINE (1975)	1102.300	L&T W CB WHITE AVE 40FT W/O C/L & 25FT S/O C/L PROD KENDELL ST	CG 4303
BASELINE (1975)	1151.918	L&T CTR CB RET @ SW COR WHITE AVE & FOOTHILL BLVD 31FT W & 52FT S/O C/L INT	CG 4304
BASELINE (1975)	1139.729	RDBM TAG 1FT N/O BCR @ NE COR FRUIT ST & FOOTHILL BLVD 65FT N & 42FT E/O C/L INT	CG 4305
BASELINE (1975)	1160.667	RDBM TAG 2FT S/O BCR @ SW COR FRUIT ST & BOWDOIN ST 54FT S & 42FT W/O C/L INT	CG 4306A
POMONA (1980)	1338.613	PK NAIL IN CONC CB 10FT N/O BCR @ NW COR LIVE OAK DR & BASELINE RD 36FT N & 15FT W C/L INT	CG 4313
POMONA (1980)	1305.516	RDBM TAG IN NW COR WEIR BOX 13FT E & 193FT N C/L INT TOWNE AVE & BASELINE RD	CG 4314
POMONA (1980)	1346.747	L & BR 1FT S BCR @ SE COR MOUNTAIN AVE & BASELINE RD 75FT S & 28FT E C/L INT	CG 4315
POMONA (1980)	1394.938	L AFC MON IN WELL 2FT N BASELINE RD & 4FT E INDIAN HILL BLVD MKD (LACO FC DIST) USE N EDGE	CG 4316
POMONA (1980)	1457.929	RDBM TAG IN NE COR CONC DRAIN 50FT S C/L BASELINE RD & 317FT W C/L MILLS AVE	CG 4318

QUAD-YEAR	ELEV	DESCRIPTION (INCLUDE QUAD AND YEAR IN DESCRIPTION)	BM NUMBER
POMONA (1980)	1467.574	L AFC MON IN WELL 2FT S C/L BASELINE RD & 2FT W C/L MILLS AVE MKD (L AFC DIST)	CG 4319
POMONA (1980)	1195.579	LACS CONT SYS MON FL @ NW COR FOOTHILL BLVD & TOWNE AVE 1FT BK OF WALK 60FT N & 60FT W C/L INT MKD (LA VERNE RM 3 1961)	CG 4320
POMONA (1980)	1256.407	NAIL IN CONC CB 1FT S/O BCR @ NW COR INDIAN HILL BLVD & FOOTHILL BLVD 40FT W & 83FT N C/L INT	CG 4321
POMONA (1980)	1352.388	RCE TAG NO 9009 S CB BLAISDELL DR 5FT W/O BCR SE COR MILLS AVE 62FT E & 19FT S C/L INT	CG 4323
POMONA (1980)	1404.084	RCE TAG NO 7344 S CB BLACK HILLS DR 1FT E/O BCR @ SE COR MILLS AVE 61FT E & 18FT S C/L INT	CG 4324
POMONA (1980)	1404.936	RCE TAG NO 7344 E CB MILLS AVE 5FT N/O BCR @ NE COR BLACK HILLS DR 50FT N & 33FT E C/L INT	CG 4325
POMONA (1980)	1620.472	RDBM TAG NW SIDE CONC BASE TO PP NO 1822460E 25FT S & 22FT E C/L INT POMELLO DR & MILLS AVE	CG 4326
POMONA (1980)	1485.729	RDBM TAG W CB FORBES AVE 15FT W C/L @ ENT WK TO SCHOOL & 83FT S INT MIRAMAR AVE	CG 4327
POMONA (1980)	1446.745	RDBM TAG IN CB 5FT S/O BCR @ SW COR 76FT S & 40FT W C/L INT MT CARMEL DR & INDIAN HILL BLVD	CG 4328
BASELINE (1975)	1163.008	RDBM TAG 1FT N/O BCR 42FT E/O C/L FRUIT ST & 59FT N/O C/L BOWDOIN ST	CG 4560
BASELINE (1975)	1171.842	RDBM TAG IN CONC CB 1FT W/O BCR 42FT S/O C/L BASELINE RD & 78FT W/O C/L FRUIT ST	CG 4561
POMONA (1980)	1515.128	L&BR IN CONC CB 1FT W/O BCR 40FT N/O C/L BASELINE RD & 78FT W/O C/L PADUA AVE	CG 4562
POMONA (1980)	1545.929	L&PK 3FT S/O BCR 32FT E/O C/L MILLS AVE & 58FT S/O C/L MIRAMAR AVE	CG 4563
POMONA (1980)	1547.988	RDBM TAG 1FT W/O BCR 20FT S/O C/L MIRAMAR AVE & 63FT W/O C/L MILLS AVE	CG 4564
POMONA (1980)	1520.551	RDBM TAG 1FT W/O BCR 20FT S/O C/L MIRAMAR AVE & 45FT W/O C/L BONNIE BRAE AVE	CG 4565
POMONA (1980)	1487.317	LACS TAG IN CB ON C/L PROD MIRAMAR AVE & 23FT W/O C/L FORBES AVE	CG 4566
POMONA (1980)	1257.800	RAMSET 20FT N/O C/L BOWDOIN ST & 51FT W/O C/L WILLIAMS AVE 1FT W/O BCR	CG 4567